

Elevation C | 2,060 SQ. FT. (+717 SQ.FT. FINISHED BASEMENT)



Elevation B | 2,036 SQ. FT. (+709 SQ.FT. FINISHED BASEMENT)



Morrison | 30 ft.



Morrison | 30 ft.

Elevation A | 2,040 SQ. FT. (+709 SQ.FT. FINISHED BASEMENT)

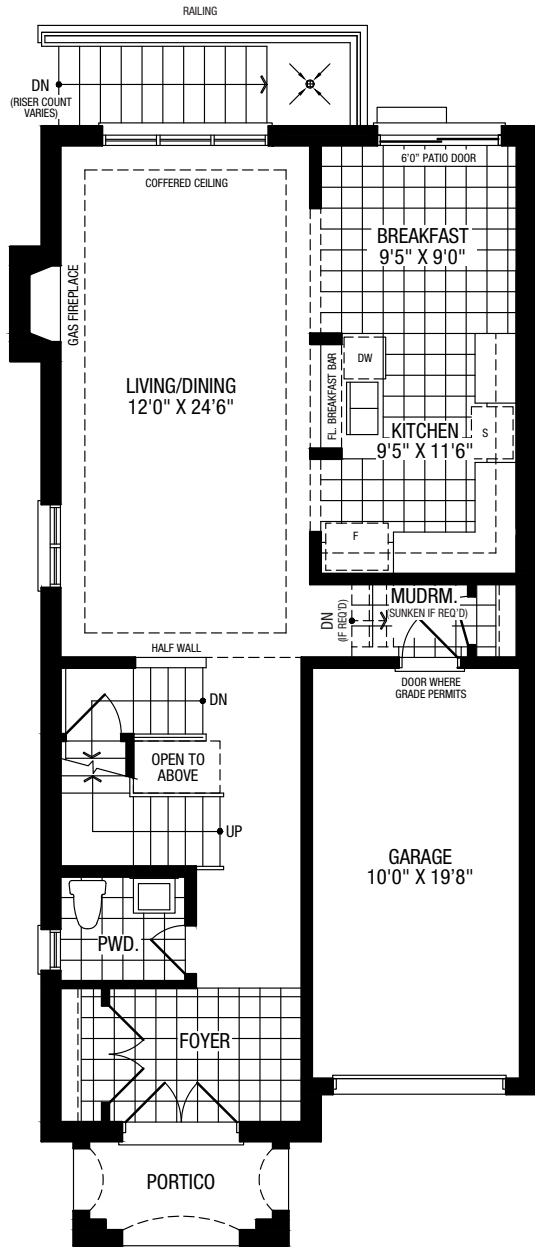


Renderings are Artists impression only. E.&O.E.



# Ground Floor

ELEVATION A

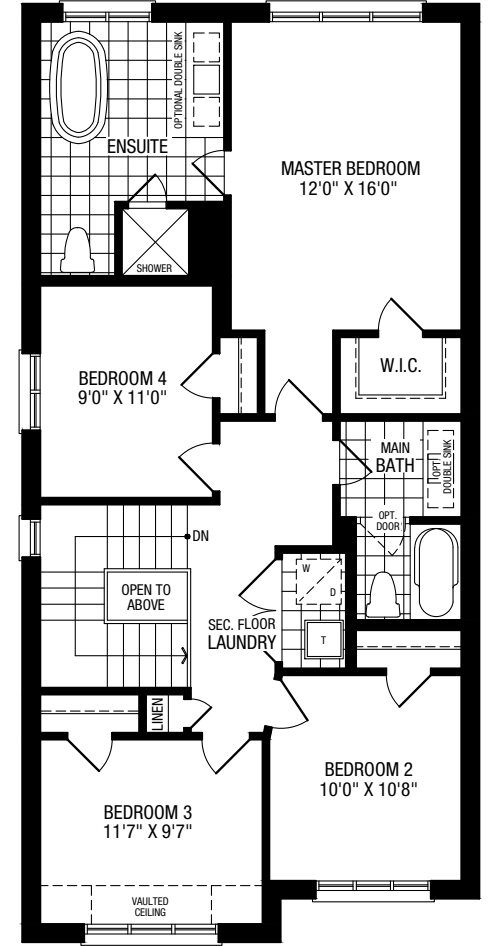
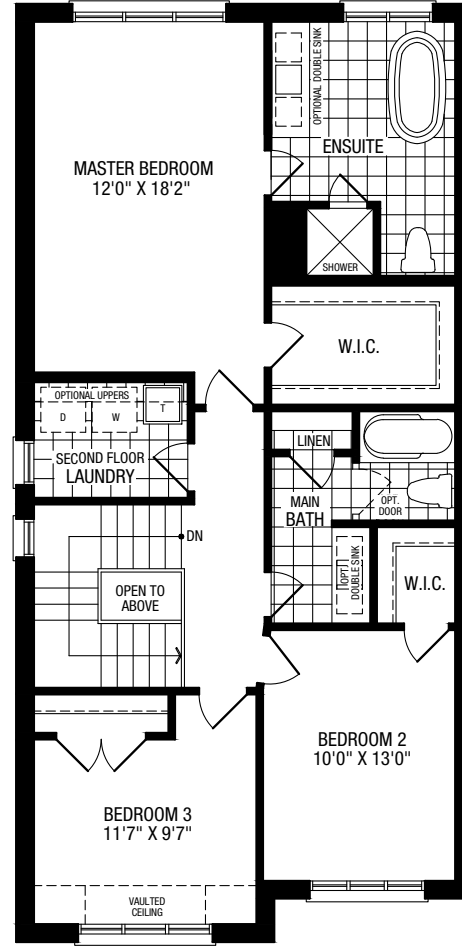


# Second Floor

## Options

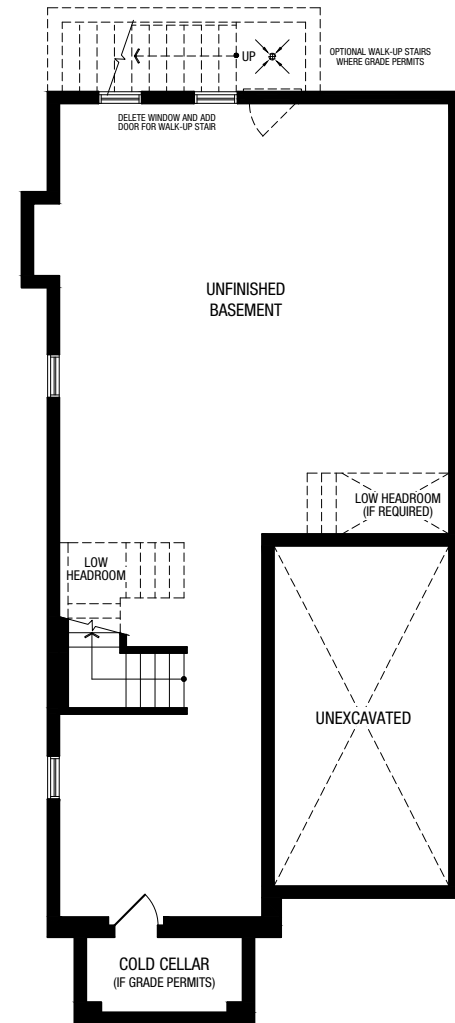
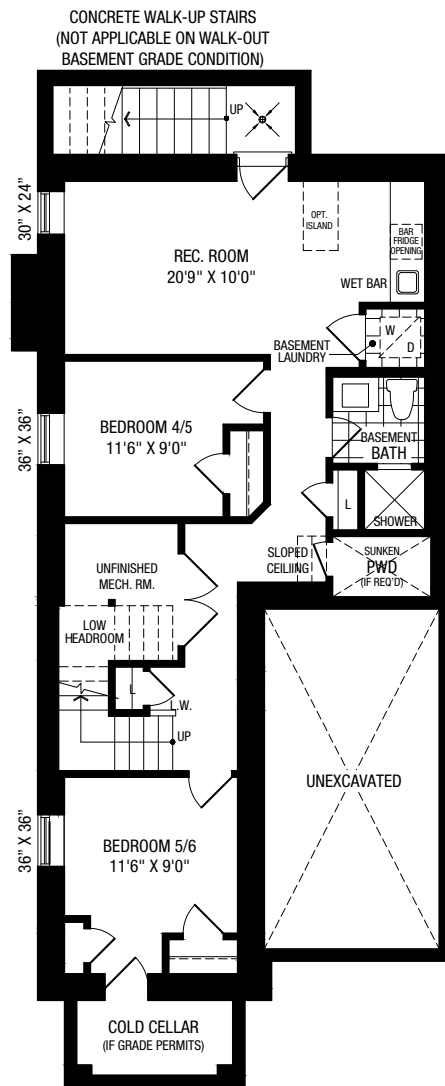
ELEVATION A (5 BED)

ELEVATION A ALT. (6 BED)



# Basement

ELEVATION A



STANDARD FINISHED  
709 SQ. FT.

OPTIONAL UNFINISHED