



EMILY WITH LOFT
BUNGALOW 4-BEDROOM

ELEVATION A – 3,073 sq.ft.

ELEVATION B – 3,073 sq.ft.

ELEVATION C – 3,073 sq.ft.



EMILY WITH LOFT

ELEVATION A - 3,073 sq.ft.



EMILY WITH LOFT

ELEVATION B - 3,073 sq.ft.



EMILY WITH LOFT

ELEVATION C - 3,073 sq. ft.

EMILY WITH LOFT ELEVATION A

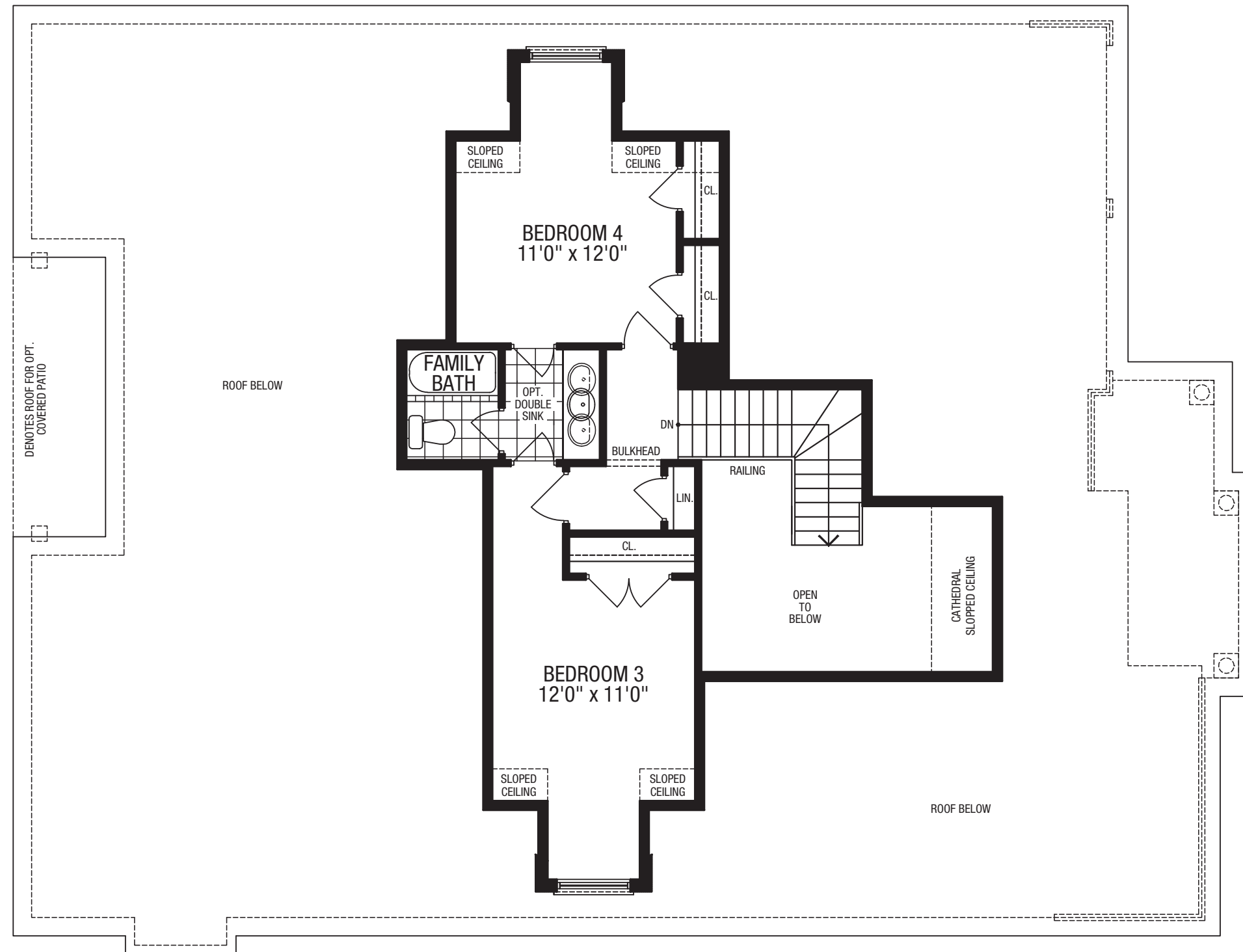
4-Bedroom – 3,073 sq.ft.



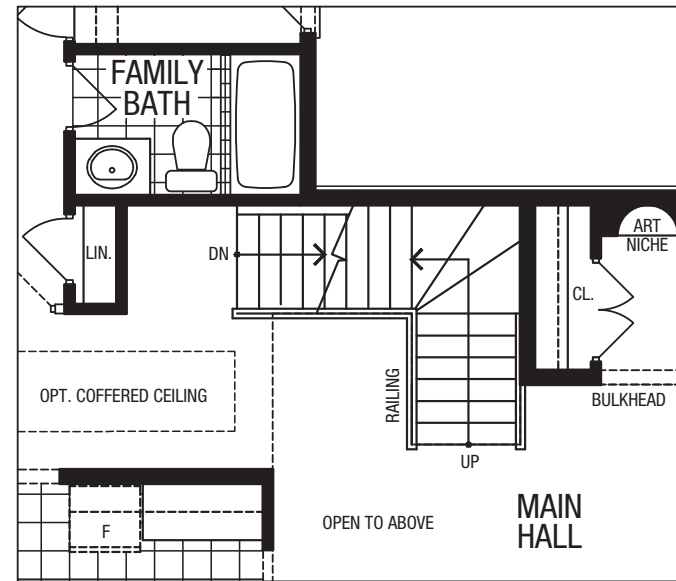
GROUND FLOOR

See Sales Consultant to view Elevation B & C Configurations.

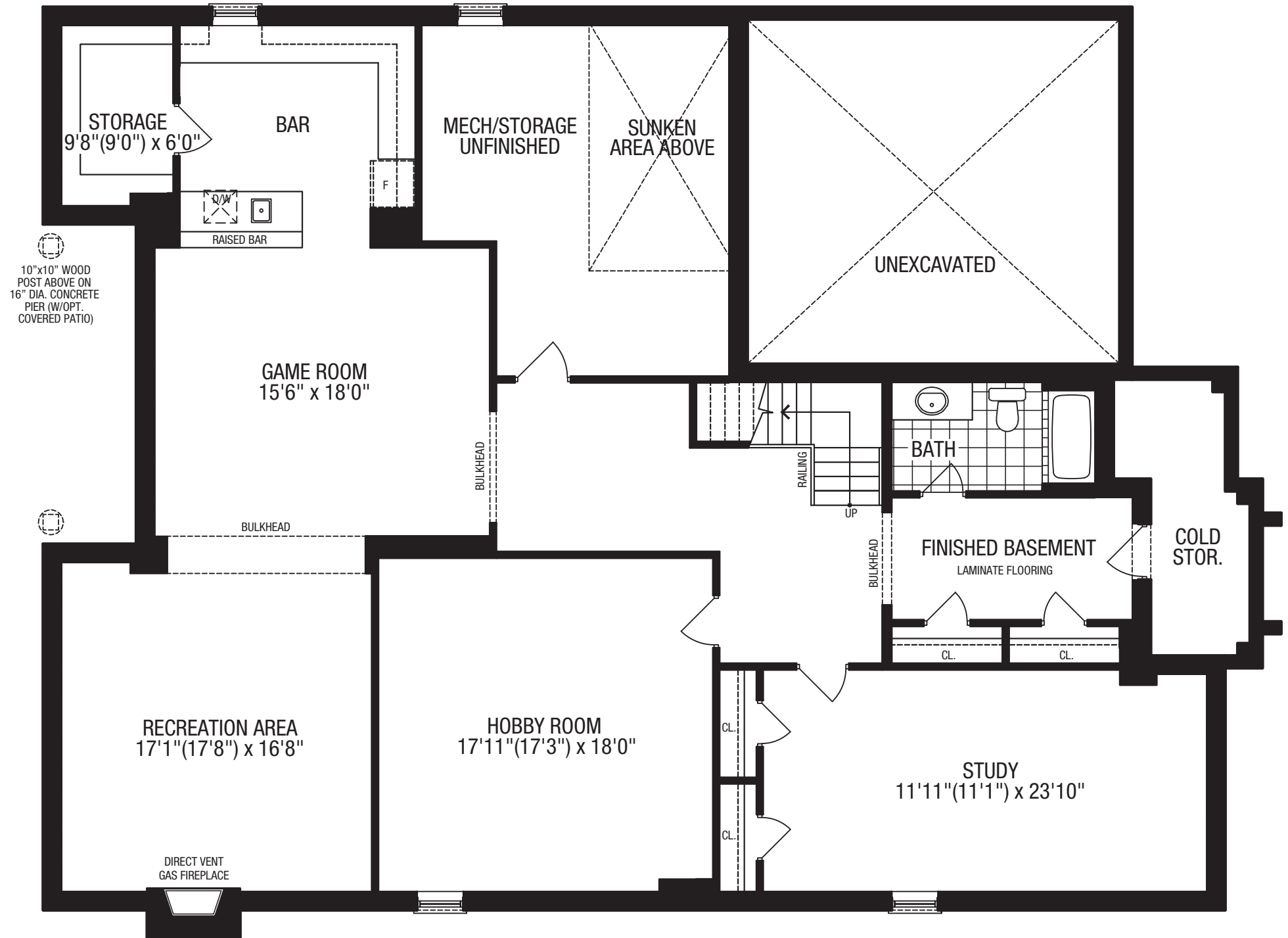
Specifications may change without notice. E.&O.E. All illustrations are artist's impressions. © Aspen Ridge Homes. All Rights Reserved. April 2013.



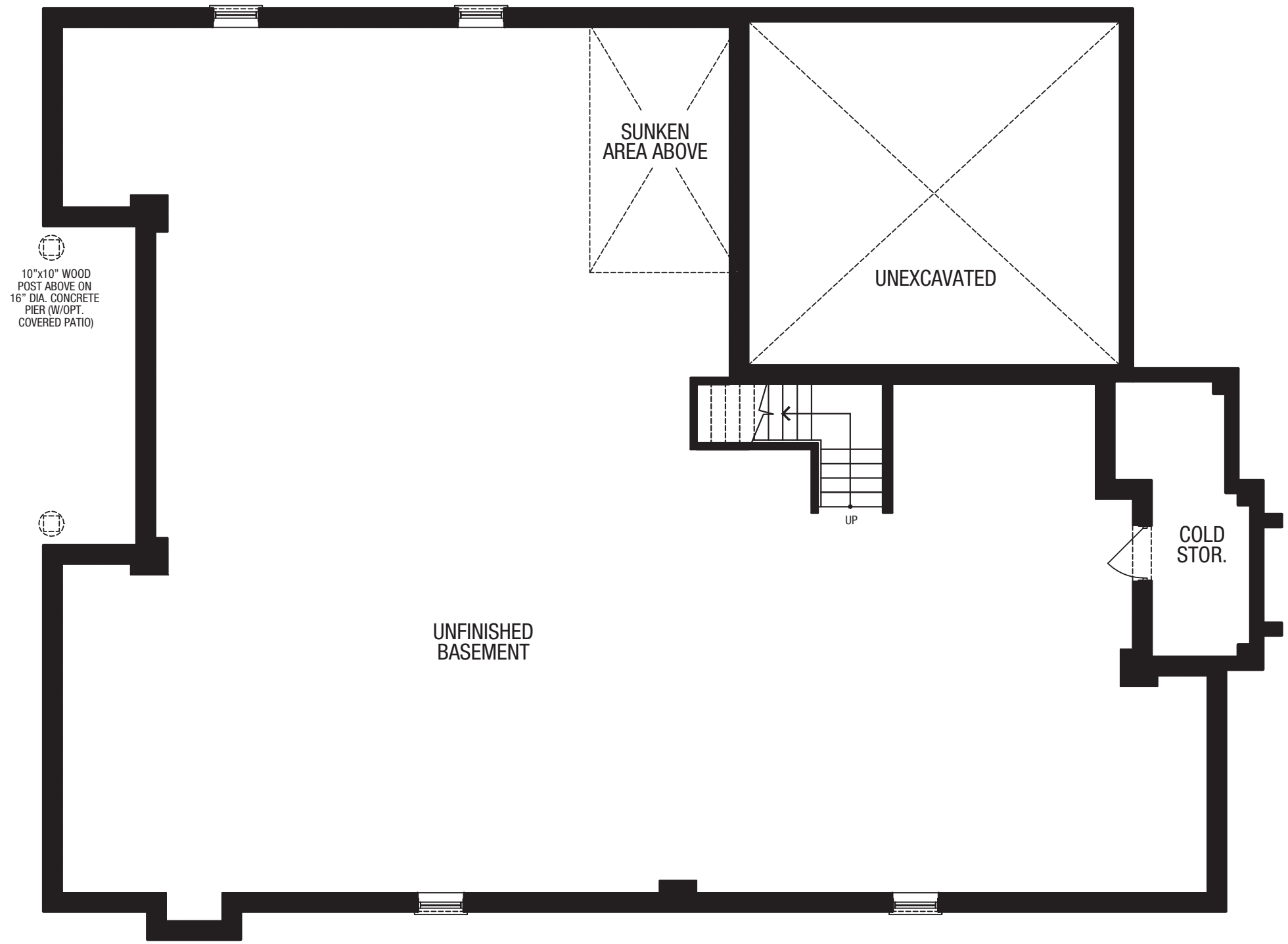
SECOND FLOOR



OPTIONAL PARTIAL
GROUND FLOOR



OPTIONAL FINISHED BASEMENT



10"x10" WOOD
POST ABOVE ON
16" DIA. CONCRETE
PIER (W/OPT.
COVERED PATIO)

SUNKEN
AREA ABOVE

UNEXCAVATED

UNFINISHED
BASEMENT

COLD
STOR.

UP

BASEMENT